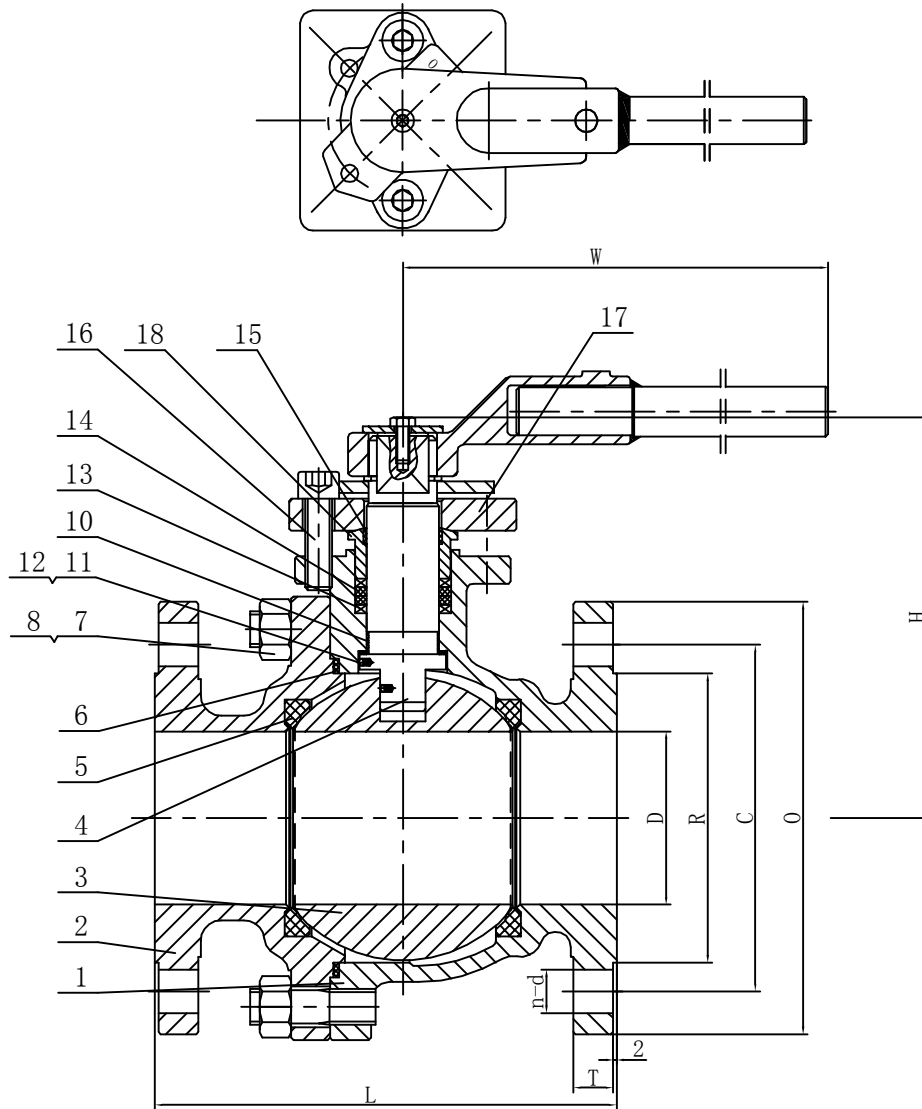


1012017



ITEM		NAME (English)	MATERIAL
1		BODY	A216 WCB
2		BONNET	A216 WCB
3		BALL	A182 F316
4		STEM	A182 F316
5		SEAT	RPTFE
6		F. S WASHER	316+GRAPHITE
7		NUT	A194 2H
8		BOLT	A193 B7
10		BEARING	RPTFE
11		SMALL STEEL BALL	A276 316
12		ANTISTATIC SPRING	A276 316
13		F. S WASHER	GRAPHITE+316
14		F. S WASHER	GRAPHITE
15		BEARING	RPTFE
16		INNER HEXAGON SCREW	A193 B7
17		GLAND FLANGE	A216 WCB
18		GLAND RING	A276 316

DESIGN STD.	API 6D	END CONN.	RF
PRES. & TEMP.	ASME B16.34	PRES. TEST	API 598
FACE TO FACE	ASME B16.10	END DIME.	ASME B16.5
MARKING	MSS SP-25	F. S. DESIGN	API 607
PAINTING		SPECIAL	

CLIENT INFORMATION			
REF.			
ORDER			
PROJECT			
CLIENT	Industrial & Designer Valves		
APPROVE			

**FZV**

ADD: WENZHOU CHINA  
 HTTP:WWW.China-FZV.COM  
 TEL:0577-67356851  
 FAX:0577-67358449

REV. NO.	MARKING	SIGNATURE	DATE
DESIGN	SLX	JOB NO.	
APPROVE	ZMJ	FZV NO.	1012017
DATE	2016-9-21	PAGE	

TYPE:  
BALL VALVE  
CLASS 300

UNIT: mm

ITEM	SIZE	L	D	R	C	O	n-d	T	W	H
33	11/2"	190	38	73	114.3	155	4-22.5	19.1	300	116
34	2"	216	50	92.1	127	165	8-19	20.7	400	140