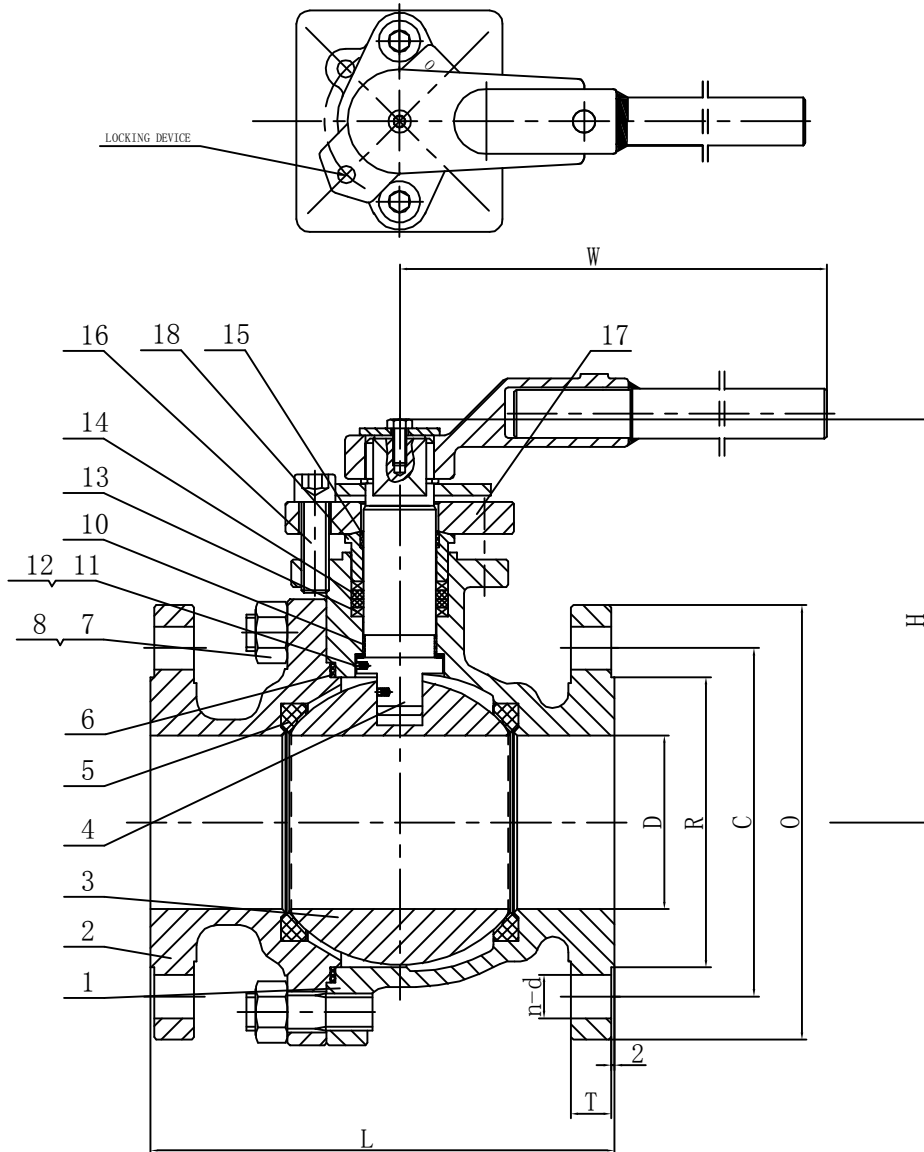



1012017



ITEM	NAME (English)	MATERIAL
1	BODY	A216 WCB
2	BONNET	A216 WCB
3	BALL	A182 F316
4	STEM	A182 F316
5	SEAT	RPTFE
6	F. S WASHER	316+GRAPHITE
7	NUT	A194 2H
8	BOLT	A193 B7
10	BEARING	RPTFE
11	SMALL STEEL BALL	A276 316
12	ANTISTATIC SPRING	A276 316
13	F. S WASHER	GRAPHITE+316
14	F. S WASHER	GRAPHITE
15	BEARING	RPTFE
16	INNER HEXAGON SCREW	A193 B7
17	GLAND FLANGE	A216 WCB
18	GLAND RING	A276 316

DESIGN STD.	API 6D	END CONN.	RF
PRES. & TEMP.	ASME B16.34	PRES. TEST	API 598
FACE TO FACE	ASME B16.10	END DIME.	ASME B16.5
MARKING	MSS SP-25	F. S. DESIGN	API 607
PAINTING		SPECIAL	

CLIENT INFORMATION			
REF.			
ORDER			
PROJECT			
CLIENT	Industrial & Designer Valves		
APPROVE			



ADD: WENZHOU CHINA
 HTTP:WWW.China-FZV.COM
 TEL:0577-67356851
 FAX:0577-67358449

REV. NO.	MARKING	SIGNATURE	DATE
DESIGN	SLX	JOB NO.	
APPROVE	ZMJ	FZV NO.	1012017
DATE	2016-9-21	PAGE	

TYPE:
BALL VALVE
CLASS 150

UNIT: mm

ITEM	SIZE	L	D	R	C	O	n-d	T	W	H
24	11/2"	165	38	73	98.4	125	4-16	12.7	300	116
25	2"	178	50	92.1	120.7	150	4-19	14.3	300	135