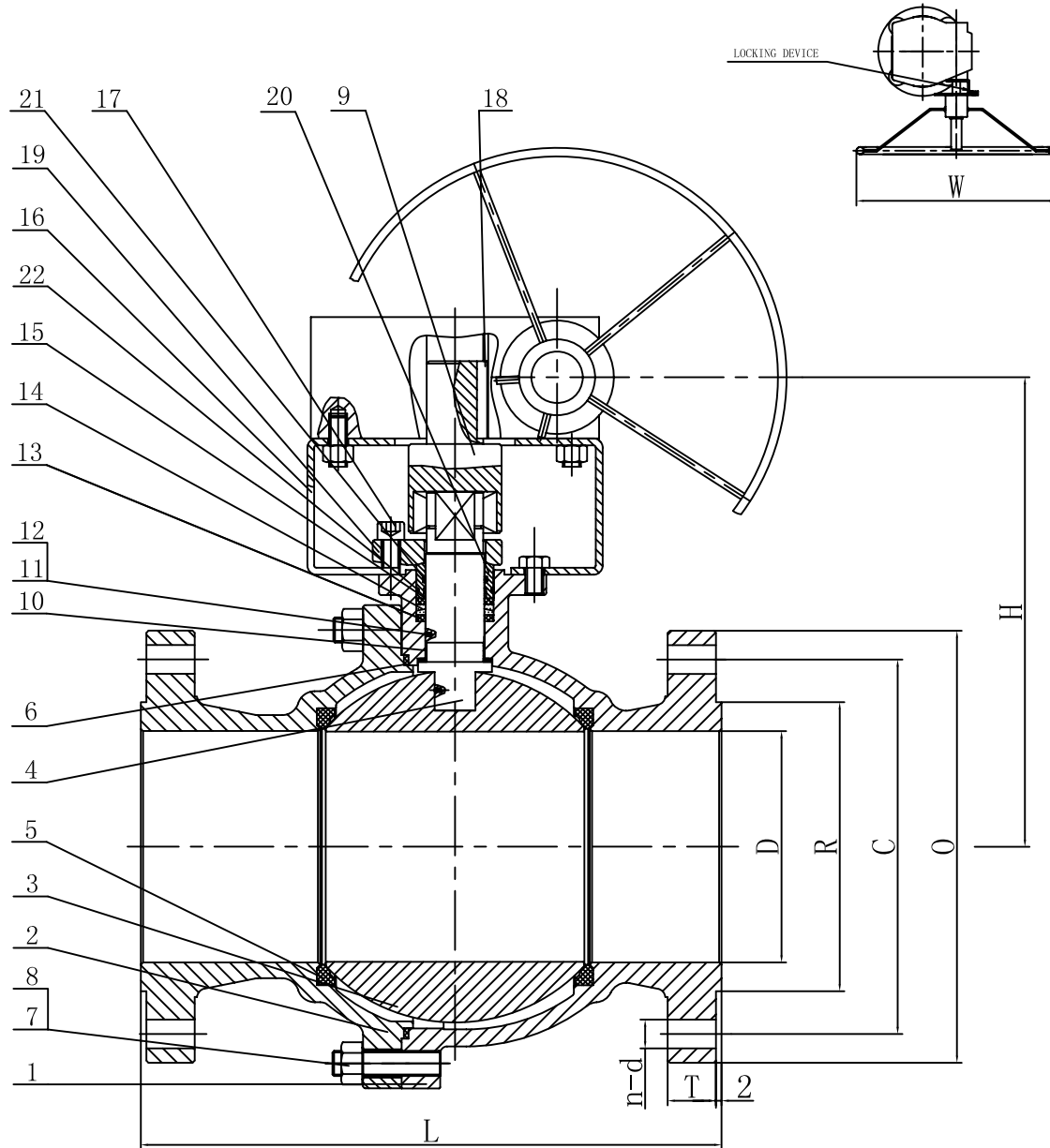


AQ1501150



ITEM	NAME(English)	MATERIAL
1	BODY	A216 WCB
2	BONNET	A216 WCB
3	BALL	A182 F316
4	STEM	A182 F316
5	SEAT	RPTFE
6	F. S WASHER	316+graphite
7	BOLT	A193 B7
8	NUT	A194 2H
9	JOINT STEM	A29 4135+ENP
10	BEARING	RPTFE
11	SMALL STEEL BALL	A276 316
12	ANTISTATIC SPRING	A276 316
13	F. S WASHER	graphite+316
14	F. S WASHER	graphite
15	BEARING	RPTFE
16	YOKE	A36
17	INNER HEXAGON SCREW	A193 B7
18	KEY	AISI 1045
19	GLAND FLANGE	A216 WCB
20	GLAND RING	A276 410
21	O-RING	VITON
22	O-RING	VITON

DESIGN STD.	API 6D	END CONN.	RF
PRES. & TEMP.	ASME B16.34	PRES. TEST	API 598
FACE TO FACE	ASME B16.10	END DIME.	ASME B16.5
MARKING	MSS SP-25	F. S. DESIGN	API 607
PAINTING		SPECIAL	

CLIENT INFORMATION			
REF.			
ORDER			
PROJECT			
CLIENT	Industrial & Designer Valves		
APPROVE			

**FZV**

ADD: WENZHOU CHINA  
 HTTP: WWW.CHINA-FZV.COM  
 TEL.: 0577-67356851  
 FAX: 0577-67358449

REV. NO.	MARKING	SIGNATURE	DATE
DESIGN	LJJ	JOB NO.	
APPROVE	ZMJ	FZV NO.	AQ1501150
DATE	2015-2-28	PAGE	

TYPE:  
BALL VALVE  
CLASS 150

UNIT: mm

ITEM	SIZE	L	D	R	C	O	n-d	T	W	H
19	6"	394	152	215.9	241.3	280	8-22.5	23.9	295	355
20	8"	457	202	269.9	298.5	345	8-22.5	27	600	414