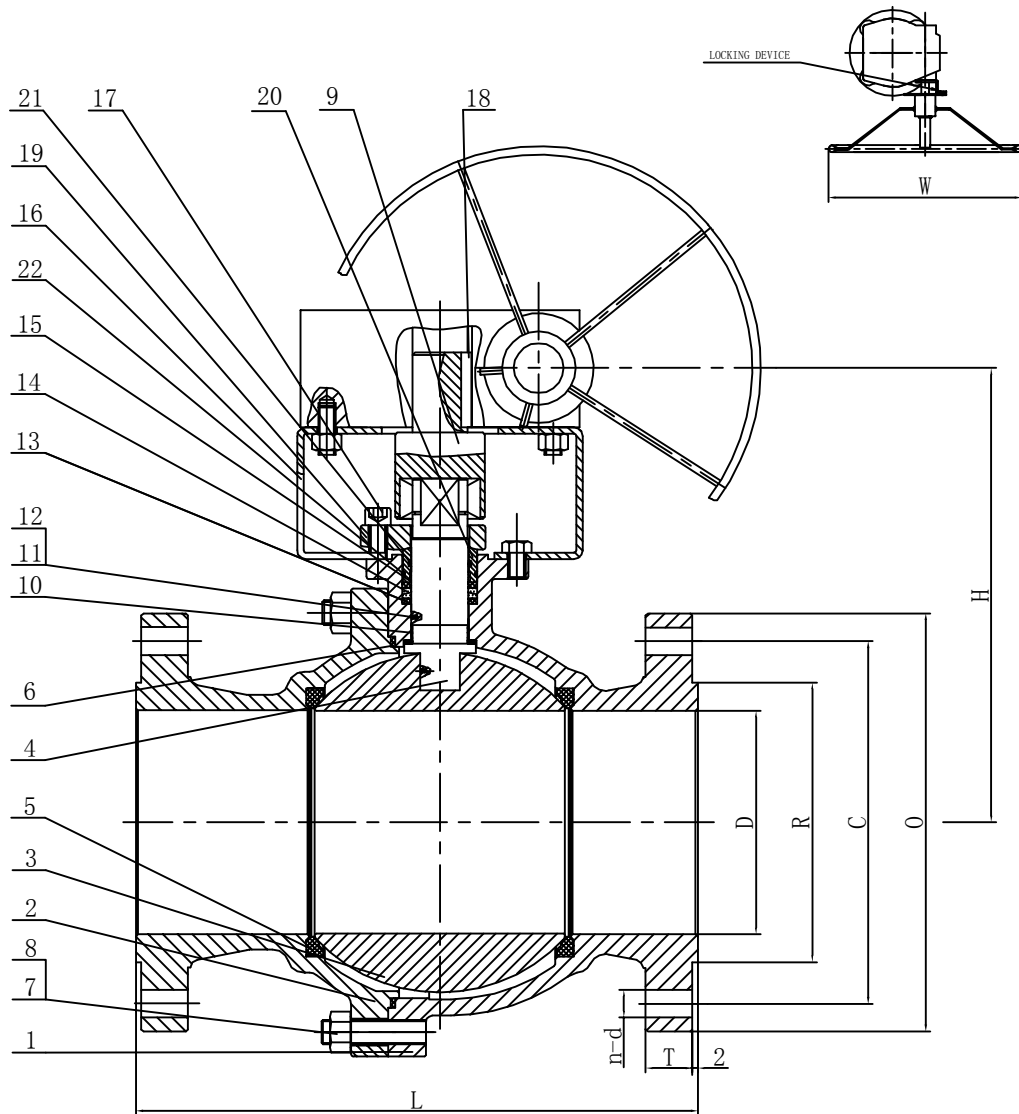



AQ1609043



ITEM	NAME (English)	MATERIAL
1	BODY	A351 CF8M
2	BONNET	A351 CF8M
3	BALL	A182 F316
4	STEM	A182 F316
5	SEAT	RPTFE
6	F. S WASHER	316+GRAPHITE
7	BOLT	A193 B8M
8	NUT	A194 8M
9	JOINT STEM	A29 4135+ENP
10	BEARING	RPTFE
11	SMALL STELL BALL	A276 316
12	ANTISTATIC SPRING	A276 316
13	F. S WASHER	GRAPHITE+316
14	F. S WASHER	GRAPHITE
15	BEARING	RPTFE
16	YOKE	A36+ENP
17	INNER HEXAGON SCREW	A193 B8M
18	KEY	AISI 1045
19	GLAND FLANGE	A351 CF8M
20	GLAND RING	A276 316
21	O-RING	VITON
22	O-RING	VITON

DESIGN STD.	API 6D	END CONN.	RF
PRES. & TEMP.	ASME B16.34	PRES. TEST	API 598
FACE TO FACE	ASME B16.10	END DIME.	ASME B16.5
MARKING	MSS SP-25	F. S. DESIGN	API 607
PAINTING		SPECIAL	

CLIENT INFORMATION				
REF.		 ADD: WENZHOU CHINA HTTP:WWW.China-FZV.COM TEL:0577-67356851 FAX:0577-67358449		
ORDER				
PROJECT				
CLIENT	南非IDV			
APPROVE				
REV. NO.	MARKING	SIGNATURE	DATE	TYPE: BALL VALVE CLASS 150
DESIGN	SLX	JOB NO.		
APPROVE	ZMJ	FZV NO.	AQ1609043	
DATE	2016-9-19	PAGE		

UNIT : mm

ITEM	SIZE	L	D	R	C	O	n-d	T	W	H
29	6"	394	152	215.9	241.3	280	8-22.5	23.9	295	355