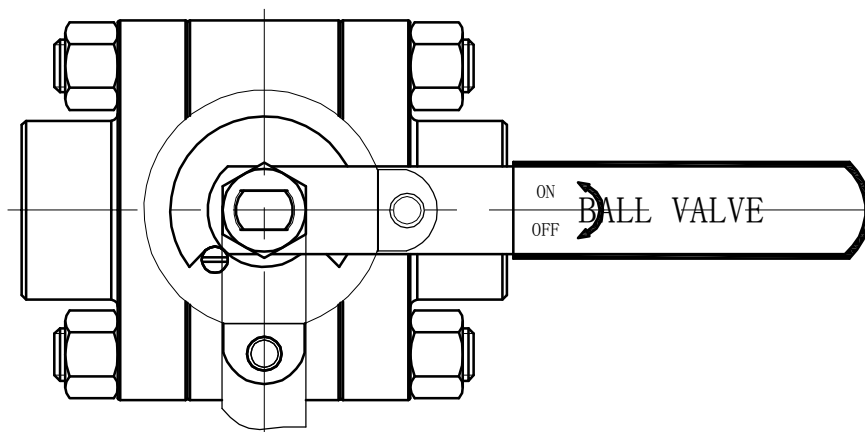
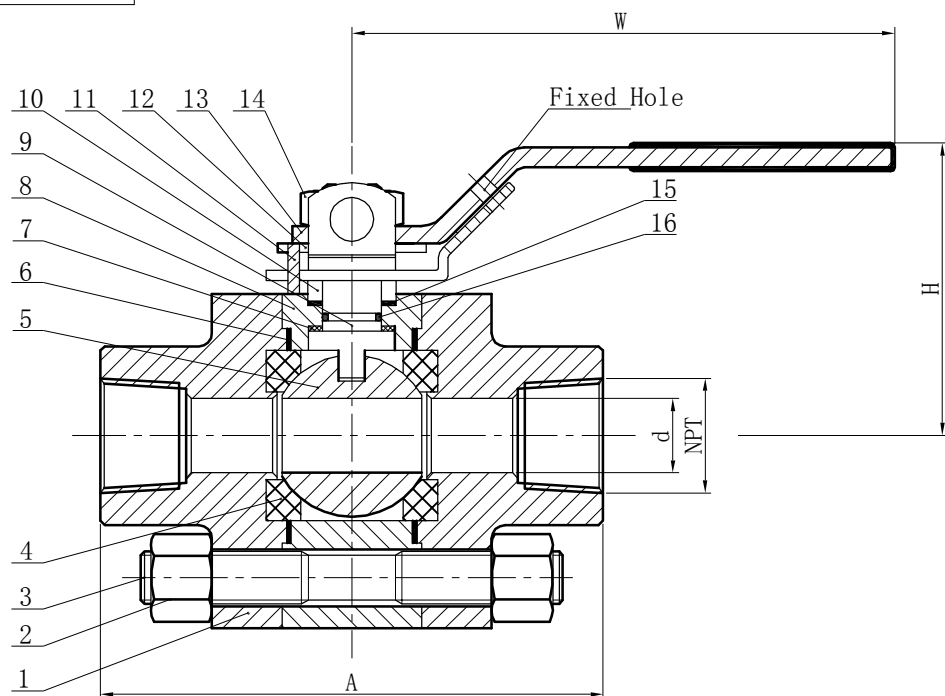


1012017



UNIT:mm

No.	INCH	A	d	NPT	H	W
65	1/2"	92	14	1/2"	62	130
66	3/4"	111	19	3/4"	73	160
67	1"	127	25	1"	95	220
68	1 1/2"	152	38	1 1/2"	110	250
69	2"	178	49	2"	120	300

NO	PART NAME	MATERIAL	REMARKS
1	BONNET	A105N	
2	NUT	A194 GR. 2H	
3	STUD BOLTS	A193 GR. B7	
4	SEAT RING	POM	
5	BALL	A182 F316	
6	BODY GASKET	GRAPHITE +SS316	
7	THRUST WASHER	RPTFE	
8	BODY	A105N	
9	STEM	A182 F316	
10	GLAND	STAINLESS STEEL	
11	POSITIONING PIN	STAINLESS STEEL	
12	POSITIONING PLATE	STAINLESS STEEL	
13	LEVER	201+PLASTIC	
14	STEM NUT	A3	
15	PACKING	GRAPHITE	
16	STEM "O" RING	VITON	

DESIGN STD.	ASME B16. 34	END CONN.	NPT
PRES. & TEMP.	ASME B16. 34	PRES. TEST	API 598
FACE TO FACE	FZV. STD	END DIME.	ANSI B1. 20. 1
MARKING	MSS SP-25	F. S. DESIGN	API 607
PAINTING		SPECIAL	

CLIENT INFORMATION			
REF.			
ORDER			
PROJECT			
CLIENT	Industrial & Designer Valves		
APPROVE			



ADD: WENZHOU CHINA
 HTTP:WWW.China-FZV.COM
 TEL:0577-67356851
 FAX:0577-67358449

REV. NO.	MARKING	SIGNATURE	DATE
DESIGN	SLX	JOB NO.	
APPROVE	ZMJ	FZV NO.	1012017
DATE	2016-9-21	PAGE	

TYPE:
 BALL VALVE
 CLASS 800