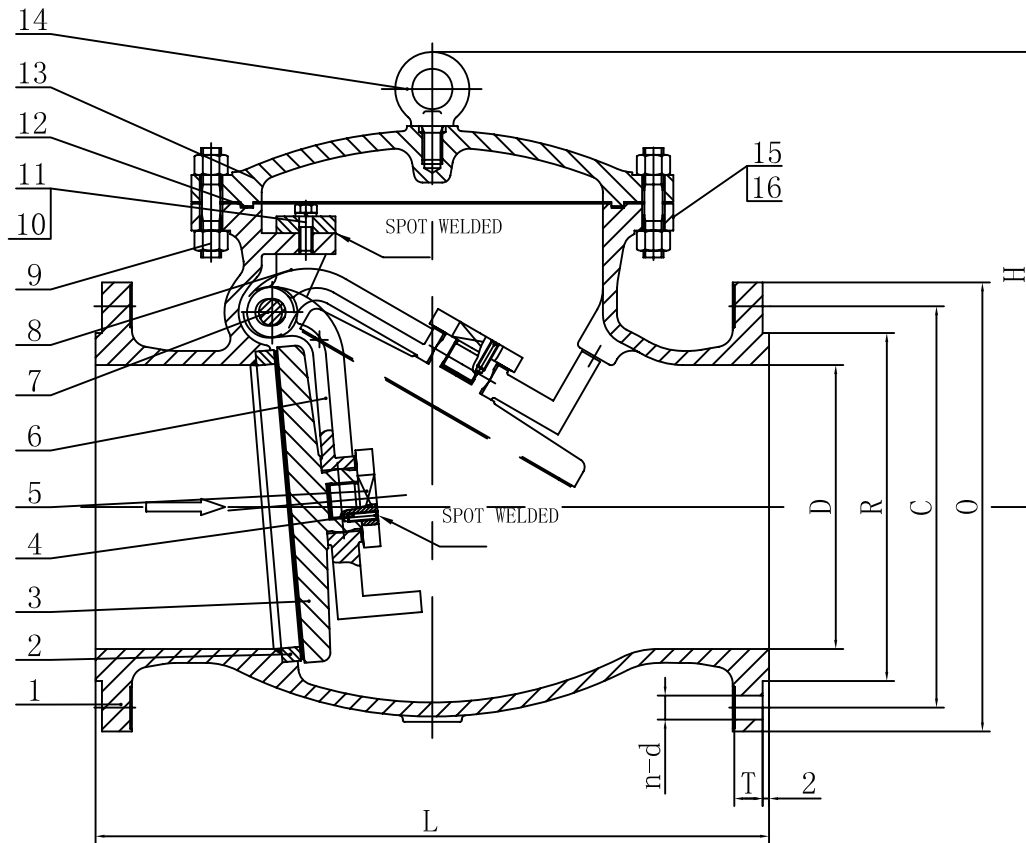
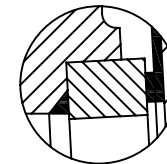


28032017



ITEM	NAME (English)	MATERIAL
1	BODY	A216 WCB
2	SEAT	A105+13CR
3	DISC	A105+13CR
4	LOCKING SCREW	SS
5	DISC COVER	A105
6	ROCKER	A216 WCB
7	PIN	A182 F6A
8	FORK PARTS	A216 WCB
9	STUD	A193 B7
10	NUT	A194 2H
11	BOLT	A193 B7
12	SPIRAL WOUNDED GASKET	304+FLEXIBLE GRAPHITE
13	COVER	A216 WCB
14	LIFTING RING SCREW	CS
15	NAMEPLATE	A276 304
16	RIVET	SS

WELDED SEAT



DESIGN STD.	BS 1868	END CONN.	RF
PRES. & TEMP.	ASME B16.34	PRES. TEST	API 598
FACE TO FACE	ASME B16.10	END DIME.	ASME B16.5
MARKING	MSS SP-25	F. S. DESIGN	
PAINTING		SPECIAL	

CLIENT INFORMATION			
REF.			
ORDER			
PROJECT			
CLIENT	Industrial & Designer Valves		
APPROVE			



ADD: WENZHOU CHINA  
 HTTP:WWW.China-FZV.COM  
 TEL:0577-67356851  
 FAX:0577-67358449

REV. NO.	MARKING	SIGNATURE	DATE
DESIGN	SLX	JOB NO.	
APPROVE	ZMJ	FZV NO.	28032017
DATE	2016-9-21	PAGE	

TYPE:  
 SWING CHECK VALVE  
 CLASS: 150

UNIT: mm

ITEM	SIZE	L	D	R	C	O	T	n-d	H
18	8"	495	203	269.9	298.5	345	27.0	8-22.5	374
19	10"	622	254	323.8	362.0	405	28.6	12-25.5	417
20	12"	698	305	381	431.8	485	30.2	12-25.5	478